

Parents & Students -

We are pleased to announce that the students in **8-Red House** at Forest Park are part of a pilot group in the district that will be using the **Google Apps for Education** suite of products for school purposes. As a Google Apps account user, students in 8-Red will have access to Google applications that allow for word processing, spreadsheets and presentation creation with future additions for website building and email. These tools fit in perfectly with what it means to be a 21st Century student and they allow for more creation, collaboration and communication to take place among students and teachers. This closed system within our district domain will help to expand the four walls of the classroom while allowing students to experience what it means to live and work in a digital world. As teachers work with students and these new tools, lessons will incorporate internet safety and online etiquette discussions to help our students understand what it means to be a digital citizen.



Specific projects that teachers may incorporate include:

- Science - Google Earth and Google Spreadsheets to chart and graph data.
- Language Arts - Google Docs to write papers that can be shared with peers or the teacher for review.
- Social Studies - Google Maps and Earth to explore time periods in history and areas of the globe.
- Student Use - Google Forms to create surveys to collect data for a class.
- Student Use - Google Drawings to create infographics around a topic in class.
- Student Use - Google Spreadsheets to track reading progress shared with the teacher for review.

As with any tools we use for the classroom, these experiences come with the understanding that responsible use will take place. This responsible use includes:

- using Google Apps for school purposes only.
- using Google Apps in ways that do not bully, harass or make others feel uncomfortable.
- using “school appropriate” language and images in all your communications and creations.
- respecting the work and privacy of others using the tools.

Use of this Google Apps account falls under Franklin’s [Student Acceptable Use of Technology](#) guidelines that students and parents agreed to at the beginning of the school year. This policy is listed on the Franklin website in the FORMS area. More information including case studies and examples for districts using Google Apps for Education can be found here: <http://www.google.com/apps/intl/en/edu/k12.html>

As this project gets underway, we want parents to be involved , too. We encourage you to ask your child how s/he is using these tools in class. Students will find Google Apps to be fun, motivating, and very helpful in their daily school work, as well as practicing skills that will last a lifetime. We are very excited to move forward with 21st century learning opportunities for your child and Google Apps gets us one step closer.

Sincerely,

Theresa West
FPMS Principal
theresa.west@franklin.k12.wi.us

Chris Reuter
FPMS Associate Principal
christopher.reuter@franklin.k12.wi.us

Chad Kafka
FPMS Technology Coach
chad.kafka@franklin.k12.wi.us

Franklin Google Apps Login Information

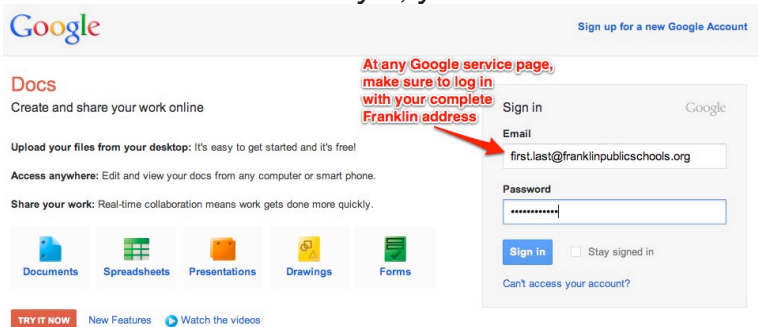
LOGIN AND PASSWORD

- Student logins are first.last@franklinpublicschools.org
- Student passwords are fpms#### where "####" is the student's 4-digit PowerSchool password

WHERE TO LOGIN

Google Apps can be accessed from the following locations:

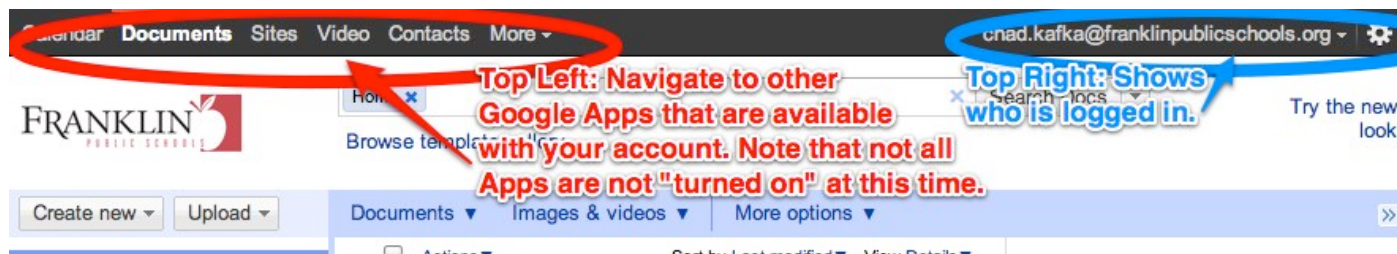
1. Your Franklin Google Account (first.last@franklinpublicschools.org) can be used to log in to Google services at Google's regular login pages (docs.google.com, sites.google.com, calendar.google.com), but you will need to type out the entire user address.
 - **Note:** *Franklin does not currently use ALL Google tools so if you experience a message that states that tool is not available yet, you will not be able to use it.*



2. From the main district site at www.franklin.k12.wi.us, go to the STUDENT LINKS page off the menu bar. Here you will find a direct link to the Franklin Google Apps login page.
 - **Note:** *At the Franklin Google Apps login page, you only have to enter your first.last because the @franklinpublicschools.org is automatically added for you.*



When logged in to your Google Apps account...



Students will be learning how to use **Google Apps for Education** in class with teachers!